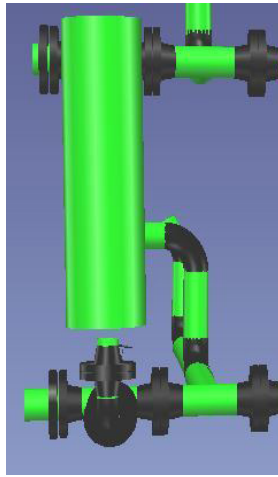


Laser Scanning & 3D Modeling

ITAC recently invested in the scanning hardware and software required to develop 3D CAD models. The laser scans and resulting models are very powerful engineering and design tools. Engineering time and costs are reduced, while accuracy, details, and safety are increased. Our customers find these tools very useful in evaluating new designs and retrofits, as the new equipment and construction features are developed into a 3D CAD model.



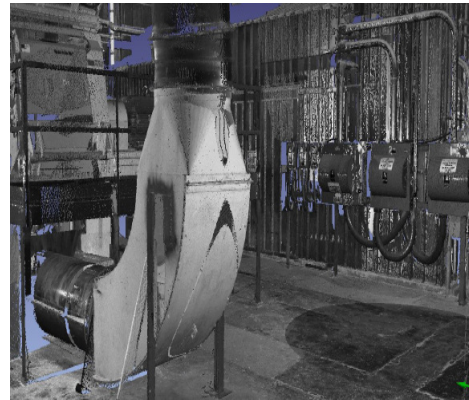
The laser scanner captures thousands of data points and uses that data to create a Point Cloud file (above left). Our engineers then convert the Point Cloud into a 3D, design-ready CAD model (above right).

INDUSTRIAL/PLANT

Accurate As-Built
Intelligent 3D CAD
Clash Detection
Retrofit and design-friendly
Engineering & Design

CONSTRUCTION

As-Built drawings following project completion
Construction monitoring
Demo packages



Point Cloud model showing a hammermill

Benefits of Laser Scanning

- Easily and accurately capture the physical measurements of any object
- Using third-party software, ITAC converts the Point Cloud into an accurate, 3D AutoCAD model
- Reduce design “clashes” and construction change orders
- Reduce need to work at elevated heights; minimizes expensive scaffolding and fall protection
- Accurate physical dimensions with the click of a mouse
- Real time QA/QC
- Reduce number of site visits and field measurements
- Information is accessible by all design disciplines in the 3D AutoCAD model
- Equipment placement/re-placement clearance scenarios are quickly and virtually evaluated

CONTACT

Please address all correspondence to:

ATTN: Steve Gordon
13141 N. Enon Church Road
Chester, VA 23836
(804) 414-1101 office
(804) 402-6095 cell
sgordon@itac.us.com
www.itac.us.com